

# TISSUE MAKING



Adding value to our Maritime resources, Irving Tissue uses our high grade kraft pulp to produce jumbo rolls of tissue. These reels of tissue are then forwarded to our plant in Moncton where quality MAJESTA brand consumer products like facial tissue, paper towels, napkins and bath tissue are produced.

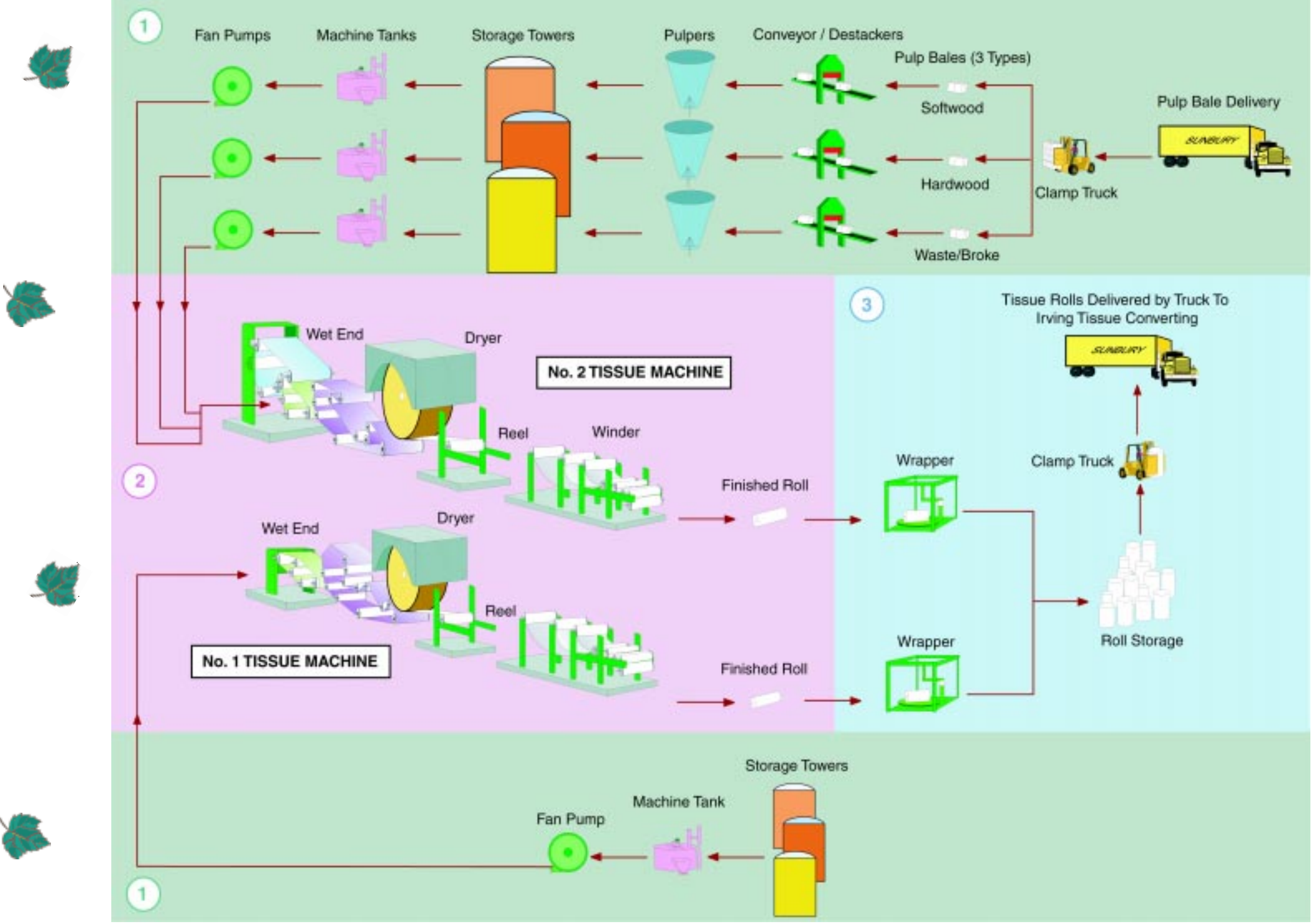
## TISSUE MAKING PROCESS

**1 Stock Preparation**  
**Delivery** - Bales of pulp are delivered by truck.  
**Conveyor** - Softwood and hardwood pulp are placed on conveyors.  
**Pulpers** - Each type of pulp is dumped into large pulpers or "beaters" which break up the pulp to make a slurry which is approximately 97% water.  
**Storage Tower** - The slurry is held in large storage towers.  
**Machine Tank** - The different types of pulp are blended to match the recipe for the particular type of tissue - facial, bath, towel or napkin.  
**Fan Pump** - The slurry is pumped to the machine.

**2 No. 1 & No. 2 Tissue Machines**  
**Slurry** - The slurry is diluted to more than 99% water and is pumped to the machine where it is formed into the tissue sheet.  
**Wet End** - The tissue sheet is carried through the wet end to the dryer by a fabric (wire and felt). The drainage allows the sheet to be reduced to 60% water.  
**Dryer** - The tissue is transferred to the dryer where the moisture is reduced to less than 5%.  
**Reel** - The sheet is removed from the dryer and then wound into large soft rolls or parent rolls.

**3 Roll Finishing & Shipping**  
**Winder** - The soft rolls are plied (1, 2, or 3 ply), pressed for softness and slit into smaller hardrolls to send to the converting mill.  
**Wrapper** - The hard rolls are wrapped and labelled.  
**Shipping** - Finished rolls are loaded and shipped by truck.

# TISSUE MAKING



## AN INSIDE LOOK



Tissue at the Reel - No. 2 Machine



Transferring Roll to Winder - Overhead Crane

## TISSUE FAST FACTS

- The No. 2 tissue machine speed runs between 5000 & 6000 ft./min. At 5280 ft./min. the speed is 60 mph! Driving at that speed all day (24 hours) would take you to Windsor, Ontario (approx.)
- Temperatures on the hood of No. 2 machine, depending on the type of tissue being made, is 550-850° F.
- The No. 1 tissue machine was built in 1959 and is capable of speeds between 2800-3000 ft./min.
- The average soft roll from the No. 2 tissue machine weighs 8,000 lbs. A single bale of kraft pulp weighs 500 lbs. and is made from 4 trees! The average soft roll is made from 64 trees.
- If you were to unroll a soft roll from No. 2 tissue machine, there would be enough tissue to reach from Saint John to Fredericton.

## OUR CUSTOMERS

Our reels of tissue go to many places in the United States and Canada.



## Questions or Comments?

Irving Tissue  
 P.O. Box 3130, Stn. B  
 Saint John, NB  
 E2M 4X7  
 (506) 635-1525

